

Newsletter

Autumn Term 2023



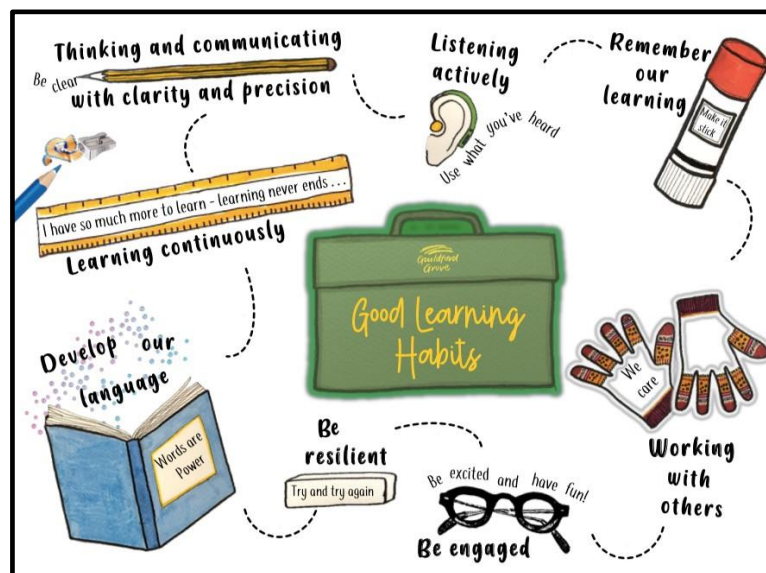
a member of
Learning Partners
academy trust

Friday 10th November 2023

This term we have been reminding our pupils about our Guildford Grove 'Good Learning Habits'. These are habits that help our pupils to be ready to learn as well as support them to make progress in their lessons.

We have been looking at these habits in our whole school assemblies. We have particularly focused on being engaged, remembering our learning and being resilient. Our Good Learning Habits posters are displayed in every classroom around the school.

Since the start of the term, it has been a joy to see our pupils across the school so focused on their learning, working hard and displaying their 'Good Learning Habits'.



Our Good Learning Habits



IMPORTANT PARKING REMINDER

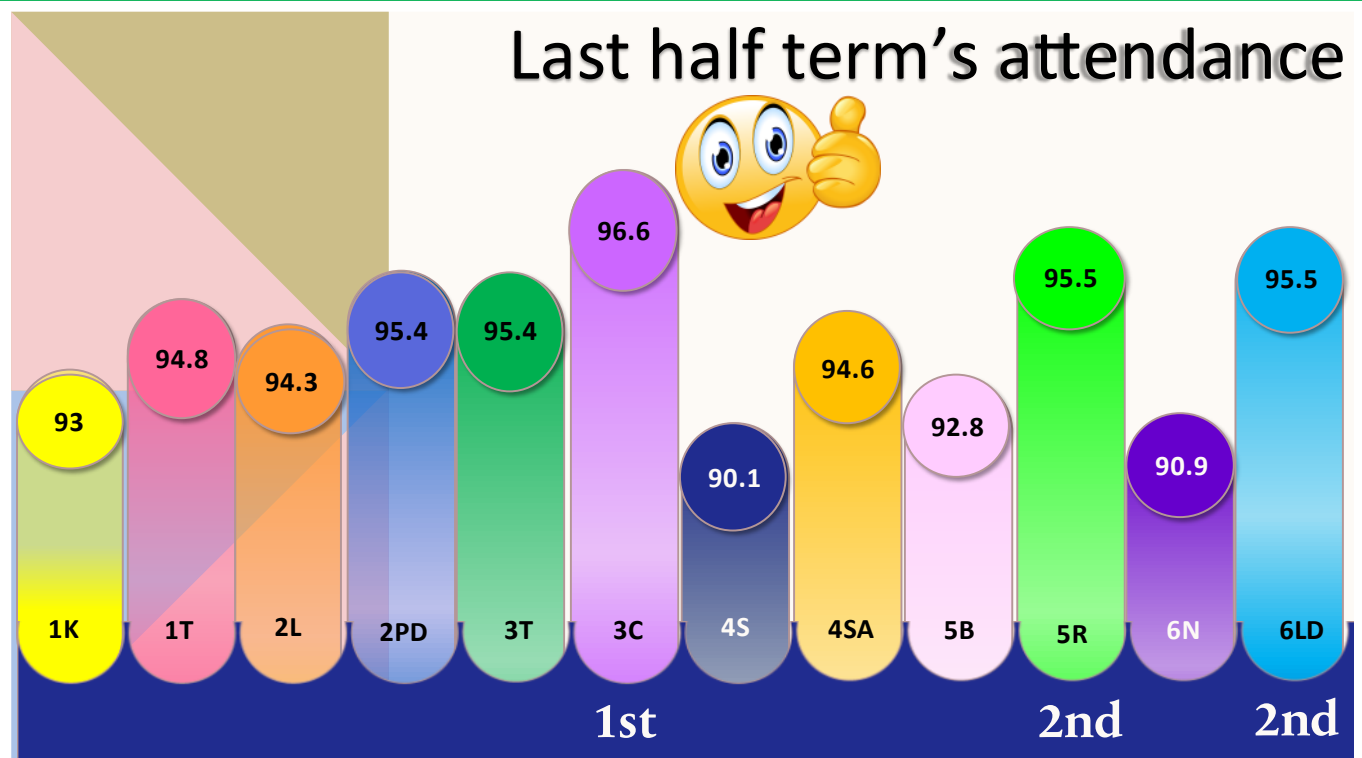
Please can we remind all parents that parking (including dropping and picking up) is not permitted in the school car park. This is for staff and Lighthouse taxis only.

Important dates

<u>Friday 17th November</u>	Wear your own clothes day (no jewellery or make-up) in return for bottles.
<u>Friday 1st December</u>	Wear your own clothes day (no jewellery or make-up) in return Reception and Year 1 bring in cakes, Year's 2, 3, 4, 5 and 6 bring in chocolates.
<u>Thursday 7th December</u>	Christmas Jumper Day, Christmas lunch and the Christmas Fayre.
<u>Friday 8th December</u>	INSET day. School closed.
<u>Monday 11th December</u>	KS2 (Years 3, 4, 5 and 6) Carol concert to parents (am and pm performances)
<u>Friday 15th December</u>	Years 1 and 2 Nativity performance to parents in the afternoon. Reception and Nursery Nativity performance to parents in the afternoon.
<u>Monday 18th December</u>	Reception and Nursery Nativity performance to parents in the morning. Years 1 and 2 Nativity performance to parents in the afternoon.
<u>Wednesday 20th December</u>	Last day of term. Early Closure at 1pm.
<u>Wednesday 3rd January</u>	INSET day. School closed.
<u>Thursday 4th January</u>	Pupils return to school. Start of the spring term.

Whole School attendance

Last half term's attendance



Educational visits



We value the importance of educational visits at Guildford Grove. These are great opportunities to support and deepen the learning we do at school as well as provide opportunities to continue to develop positive relationships and build their own independence. This term, we have enjoyed a range of visits including a trip to Marwell Zoo, Butser Ancient Farm and a residential to Sayers Croft.

Welcome our new caretaker



This week, we welcomed a new caretaker to Guildford Grove. Mr Peacock is busy getting to know the systems and procedures we have in place at Guildford Grove and getting to know the school site. We know you will all give him a warm welcome.

Reporting your child's absence from school

If your child is absent from school, this **must be reported through our studybugs app**. You must report this absence **before 9am**.

If you are requesting a **leave of absence** for your child, you will need to fill out a leave of absence request form from the school office.